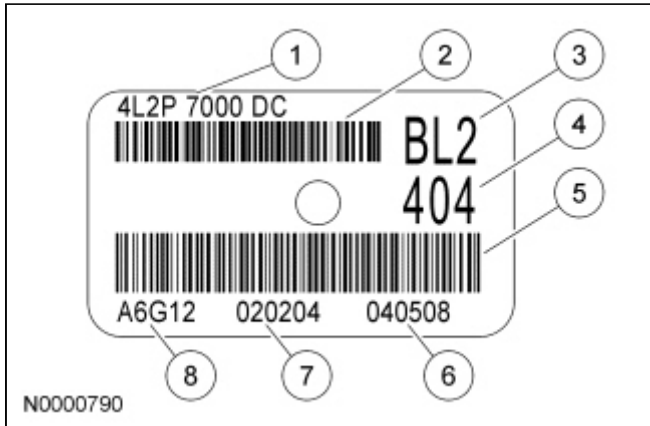


Identification Tags

Identification Tag Located on Transmission Case



Item	Description
1	Transmission part number
2	Bar code 1
3	Transmission plant model code part 1
4	Transmission plant model code part 2
5	Bar code 2
6	Transmission serial number
7	Transmission build date (DD MM YY)
8	Assembly plant line shift

All vehicles come equipped with a Safety Compliance Certification Label. The location on the label marked TR is reserved for the transmission code. To determine the correct transmission for this vehicle, refer to the Owners's Literature, Transmission Code Designations. For transmission model, service identification level or build date information, refer to the transmission service identification tag located on the transmission case.

